
ANNIEVILLE NEWS

Meeting the needs of all our students



As you may have heard, Annieville has opened up and started providing child-minding for children of Essential Workers on Monday, last week. Our wonderful EAs have been working in the Multi-purpose room and Band room with very small groups of children. There are strict guidelines in place for social distancing, hand washing and using outdoor spaces as much as possible. Things have changed in our world so dramatically and we have to do things differently in order to keep everyone healthy and safe.

Based on the Premier's announcement, plans are being developed by the Delta School District to ensure a safe return to school for all students and staff. We anticipate more details will be out to families by the end of the week. I will share them with you as soon as I am able. Below are a few details from Premier Horgan's announcements.

Key Elements

- ◆ Parents have the **choice** of bringing their children back to class.
- ◆ The goal is to return to full-time classes in September **provided it is safe to do so**.
- ◆ Schools will run on **part-time** basis.
- ◆ The number of students who may be in school each day will be **reduced**.
- ◆ The school district is required to develop a plan, following the strict guidelines from the Provincial Health Officer & WorkSafeBC **before** moving to in-person learning.

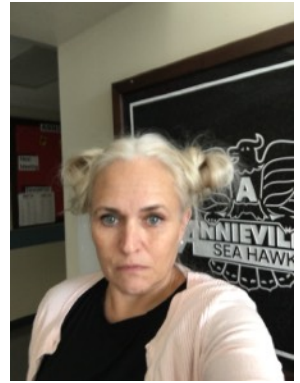
Annieville Spirit Days



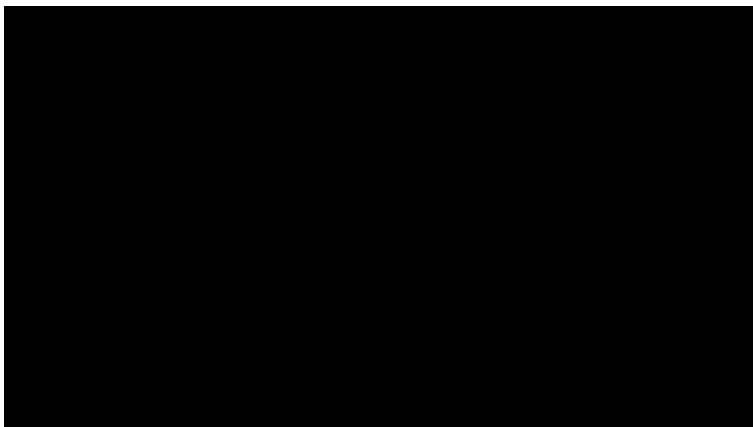
**Wow! Look at that
Lego Creation!**



Crazy Hair!



Annieville Has Heart!





MELISSA B

HANNAH C

MADDISON C

NOAH L

IYLEY M

LUCIEN M

KAIDEN M

COOPER N-W

VERONICA P

JOSEPH R

AYDEN S

TALON T

Student Placement Consideration for 2020-21

It's at this time of the year that we begin organising for the upcoming school year. Parents, as our partners in education we recognize that you may have information about your child, such as social, emotional and academic needs or environments in which you believe your child works best that you would like to share with us.

Organising classes is a very complex task that considers a variety of factors including learning styles and strengths, degree of independence in both work habits and self-regulation, social and personal needs, and previous placements. The teachers have spent the year with your child, getting to know their strengths, interests and areas that may be a challenge for them. Considering all these factors, we do our best to create balanced classes that will meet all of our students' needs.

If you believe you have information about your child that will assist us in making the best possible placement, a Student Placement Consideration form will be available at request and can be emailed to you. Email us at annievillem.cims@deltasd.bc.ca (Paper copies are also available at the office.) Forms need to be returned **by May 25, 2020 to the office.**

Please know that the forms you submit will be shared with teachers to help them in organising classes. Because ours is a small school we often have to organise in such a way that there are combined (what some of you may call *split*) classes. Unfortunately, this means we **are not** able to accommodate requests for students to be in straight grades. Finally, please understand that in September, when classes have been determined, **requests cannot** be accommodated at that time.

Kind Regards,

Mrs. Kwasnicki